

USB-C Dock Removable Clip for Laptops and Tablets

Model:
U442-DOCK15-S

USB Type-C® and USB-C®
are registered trade-
marks of USB Imple-
menters Forum.



Purchased product
may differ from image.

Este manual está disponible en español en la página de Eaton:
Tripplite.Eaton.com/support

Ce manuel est disponible en français sur le site Web de Eaton :
Tripplite.Eaton.com/support

Dieses Handbuch ist in deutscher Sprache auf der Eaton-Website verfügbar:
Tripplite.Eaton.com/support

Questo manuale è disponibile in italiano sul sito web di Eaton:
Tripplite.Eaton.com/support

EAT•N

Powering Business Worldwide

Product Features

- On-the-go docking station connects to a USB-C port to give your device HDMI video, audio, data and memory card ports.
- USB-C Power Delivery (PD) 3.0 port provides up to 60W of power to your USB-C enabled device.
- Sends crystal-clear 4K x 2K @ 30 Hz video signals to a 4K-enabled HDMI TV or projector.
- USB 2.0 Type-A port supports data transfer speeds up to 480 Mbps and is backward compatible with USB 1.1.
- SD and Micro SD memory card slots can be used simultaneously and support 5 Gbps transfer speeds.
- Listen to music or record a podcast using the available 3.5 mm audio port.
- HDMI 1.4 and HDCP 1.4 compliant.
- Plug-and-play design, no external power or drivers needed.

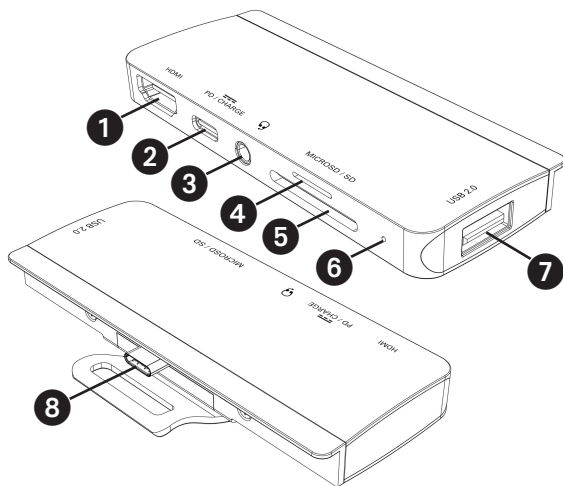
Package Contents

- U442-DOCK15-S
- Owner's Manual

Optional Accessories:

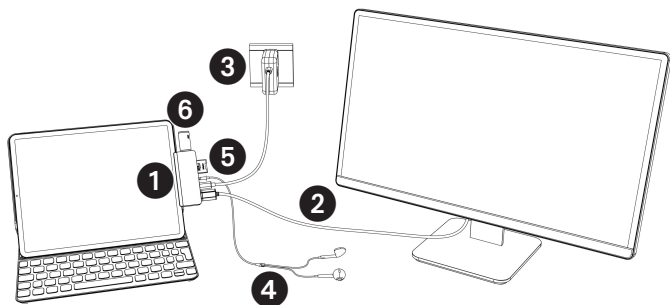
- P312-Series 3.5 mm Mini Stereo Audio Cables
- P569-Series High-Speed HDMI Cables
- U050-XXX-GY-MAX Heavy-Duty USB-A to USB Micro-B Cables

Product Overview



- ❶ **HDMI Port:** Supports resolutions up to 4K x 2K (3840 x 2160) @ 30 Hz
- ❷ **USB-C Port:** Supports PD 3.0 Charging up to 60W (20V/3A)
- ❸ **3.5 mm Audio Port:** Supports audio output and microphone input
- ❹ **Micro SD Card Slot**
- ❺ **SD Card Slot**
- ❻ **LED:** Illuminates white when power is supplied
- ❼ **USB 2.0 Type-A:** Supports data transfer rates up to 480 Mbps
- ❽ **USB 3.2 Gen 1 Type-C (Male)**

Installation



- 1 Connect the USB 3.2 Gen 1 Type-C male connector to your USB-C enabled device.
Note: Insert until the clip is fully secured to your device or until a click is heard.
- 2 Using an HDMI cable, such as P569-Series (sold separately), connect the HDMI port to your monitor, TV or projector.
- 3 Connect your USB-C device's power supply or adapter to the available USB-C PD 3.0 port.
- 4 Connect headphones or a microphone to the 3.5 mm port.
- 5 Insert an SD or Micro SD memory card into the corresponding slot to access external memory.
Note: Both memory card slots can be used simultaneously.
- 6 Transfer data up to 480 Mbps using the USB 2.0 Type-A port.

Specifications:

Input Connector	
USB-C	(x1) USB 3.2 Gen 1 Type-C (Male)
Output Connectors	
USB-A	(x1) USB 2.0
USB-C	(x1) USB-C PD Charging Only
HDMI	HDMI
Audio	3.5 mm
Memory Cards	(x1) SD, (x1) Micro SD
Environmental	
Operating Temperature	32°F to 122°F (0°C to 50°C)
Operating Humidity	10 to 90% RH, Non-Condensing
Storage Temperature	-4°F to 158°F (-20°C to 70°C)
Storage Humidity	0 to 95% RH, Non-Condensing
Mechanical	
Unit Dimensions	1.3 x 3.9 x 0.5 in. (33 x 99 x 12.7 mm)
Unit Weight	0.1 lb. (0.05 kg)
Specifications	
HDMI Specification	1.4
HDCP Specification	1.4
Max Supported Video Resolution(s)	HDMI: 3840 x 2160 @ 30 Hz
Support Color Depth (HDMI)	36 bit (12 bits per channel)
Chroma Subsampling (HDMI)	YCbCr: 4:4:4, 4:2:2, 4:2:0
Audio Specifications	Stereo Audio and Microphone Input
PD Charging Specification	PD 3.0 (60W)

Warranty

3-Year Limited Warranty

We warrant our products to be free from defects in materials and workmanship for a period of three (3) years from the date of initial purchase. Our obligation under this warranty is limited to repairing or replacing (at its sole option) any such defective products. Visit Triplite.Eaton.com/support/product-returns before sending any equipment back for repair. This warranty does not apply to equipment which has been damaged by accident, negligence or misapplication or has been altered or modified in any way.

EXCEPT AS PROVIDED HEREIN, WE MAKE NO WARRANTIES, EXPRESS OR IMPLIED, INCLUDING WARRANTIES OF MERCHANTABILITY AND FITNESS FOR A PARTICULAR PURPOSE. Some states do not permit limitation or exclusion of implied warranties; therefore, the aforesaid limitation(s) or exclusion(s) may not apply to the purchaser.

EXCEPT AS PROVIDED ABOVE, IN NO EVENT WILL WE BE LIABLE FOR DIRECT, INDIRECT, SPECIAL, INCIDENTAL OR CONSEQUENTIAL DAMAGES ARISING OUT OF THE USE OF THIS PRODUCT, EVEN IF ADVISED OF THE POSSIBILITY OF SUCH DAMAGE. Specifically, we are not liable for any costs, such as lost profits or revenue, loss of equipment, loss of use of equipment, loss of software, loss of data, costs of substitutes, claims by third parties, or otherwise.

Warranty

FCC Notice, Class B

This device complies with part 15 of the FCC Rules. Operation is subject to the following two conditions: (1) This device may not cause harmful interference, and (2) this device must accept any interference received, including interference that may cause undesired operation.

Note: This equipment has been tested and found to comply with the limits for a Class B digital device, pursuant to part 15 of the FCC Rules. These limits are designed to provide reasonable protection against harmful interference in a residential installation. This equipment generates, uses and can radiate radio frequency energy and, if not installed and used in accordance with the instructions, may cause harmful interference to radio communications. However, there is no guarantee that interference will not occur in a particular installation. If this equipment does cause harmful interference to radio or television reception, which can be determined by turning the equipment off and on, the user is encouraged to try to correct the interference by one or more of the following measures:

- Reorient or relocate the receiving antenna.
- Increase the separation between the equipment and receiver.
- Connect the equipment into an outlet on a circuit different from that to which the receiver is connected.
- Consult the dealer or an experienced radio/TV technician for help.

Any changes or modifications to this equipment not expressly approved by Eaton could void the user's authority to operate this equipment.

Warranty

WEEE Compliance Information for Customers and Recyclers (European Union)



Under the Waste Electrical and Electronic Equipment (WEEE) Directive and implementing regulations, when customers buy new electrical and electronic equipment from Eaton, they are entitled to:

- Send old equipment for recycling on a one-for-one, like-for-like basis (this varies depending on the country)
- Send the new equipment back for recycling when this ultimately becomes waste

Use of this equipment in life support applications where failure of this equipment can reasonably be expected to cause the failure of the life support equipment or to significantly affect its safety or effectiveness is not recommended.

Eaton has a policy of continuous improvement. Specifications are subject to change without notice. Photos and illustrations may differ slightly from actual products.



Powering Business Worldwide

Eaton
1000 Eaton Boulevard
Cleveland, OH 44122
United States
Eaton.com

© 2023 Eaton
All Rights Reserved
Publication No. 23-10-263 /
93-3BB7_RevC
December 2023



933BB7

Eaton is a registered trademark.

All trademarks are property of their respective owners.