

# Instruction Sheet

## Tripp Lite Networked Device Mass Configuration Utility

### Introduction

The Tripp Lite Networked Device Mass Configuration Utility enables the configuration of one networked Tripp Lite device to be copied and transferred onto multiple other such devices. It can be used with networked Tripp Lite devices that run version 12.06.0060 (or later) firmware. These devices include: SNMPWEBCARD, Tripp Lite monitored PDUs, Tripp Lite switched PDUs and SRCOOLNET.

**Note:** Configuration data can be imported from Tripp Lite devices running 12.04.0055, but devices running 12.04.0055 cannot be configured using this tool. Target devices must be running 12.06.0060 or later version firmware.

### System Requirements

PC running Microsoft Windows (7, 8, Server 2008, Server 2012)

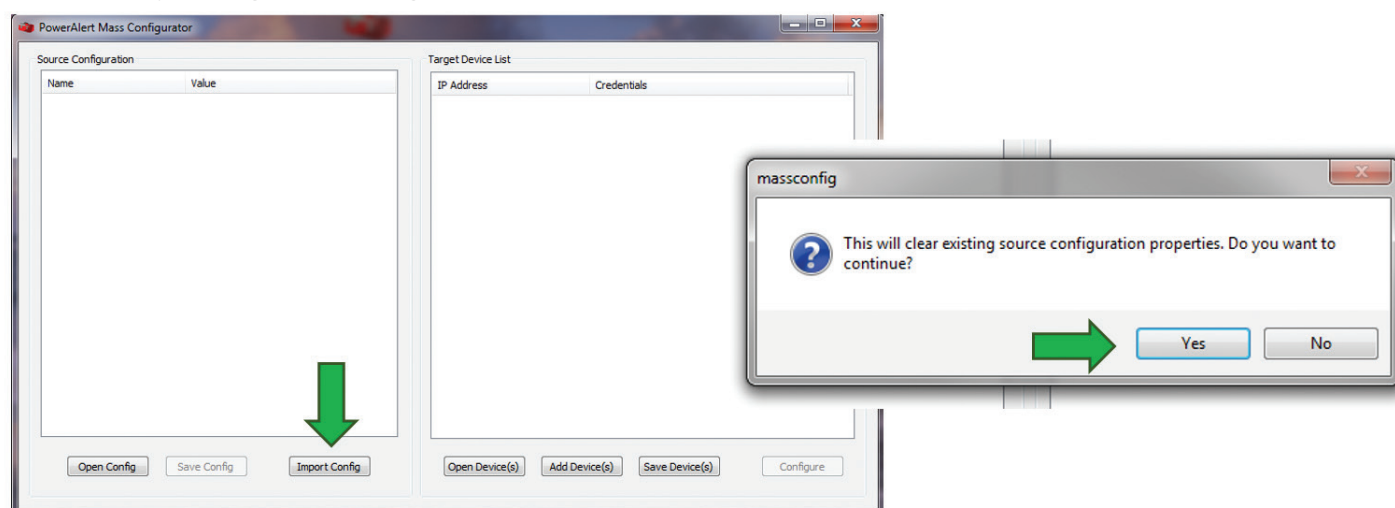
TCP/IP network connection\*

\* If you are logging in with Administrator credentials, be sure port 3664 is open in your firewall, if applicable. If you are logging in with SNMP credentials, make sure to open port 161, or the appropriate SNMP port as configured on your card. If you are unsure, open both ports.

### Usage Instructions

Prior to using this utility, it is suggested that all required configuration changes be made to the device which will be chosen as the source. These changes can be made in the device's PowerAlert interface. Make a note of the device's IP address, as it will be needed in a later step.

**STEP 1.** Upon launching the utility, choose the source device by clicking the *Import Config* button. A warning will appear indicating that any existing source configuration will be cleared. Click Yes.



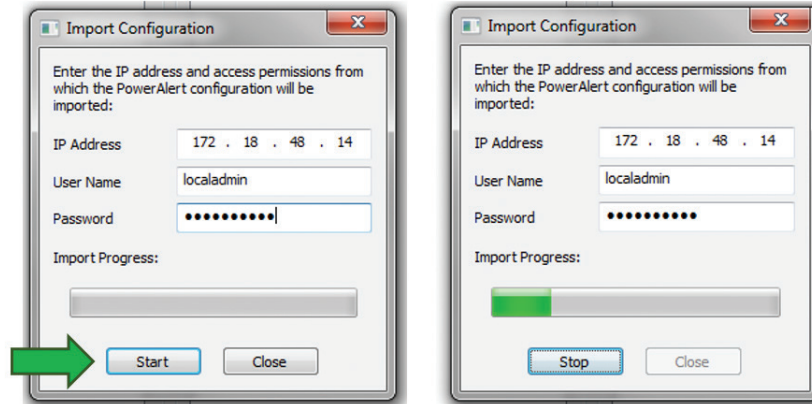
1111 W. 35th Street, Chicago, IL 60609 USA • [www.triplite.com/support](http://www.triplite.com/support)

Copyright © 2014 Tripp Lite. All rights reserved.

## Usage Instructions

**STEP 2.** In the Import Configuration window that appears, enter the IP address of the source device along with its User Name and Password, then click **Start**. A progress bar will indicate status of locating the source device and reading its configuration.

**Note:** If importing a 12.04.0055 configuration, the User Name should be left blank and the Password should be the SNMPv2c Community Name.

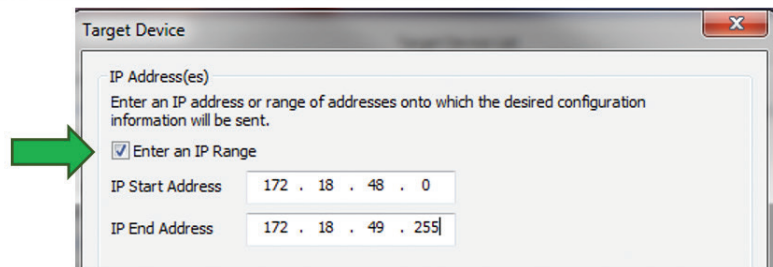
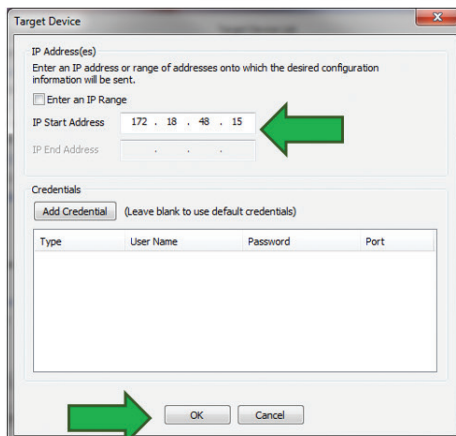
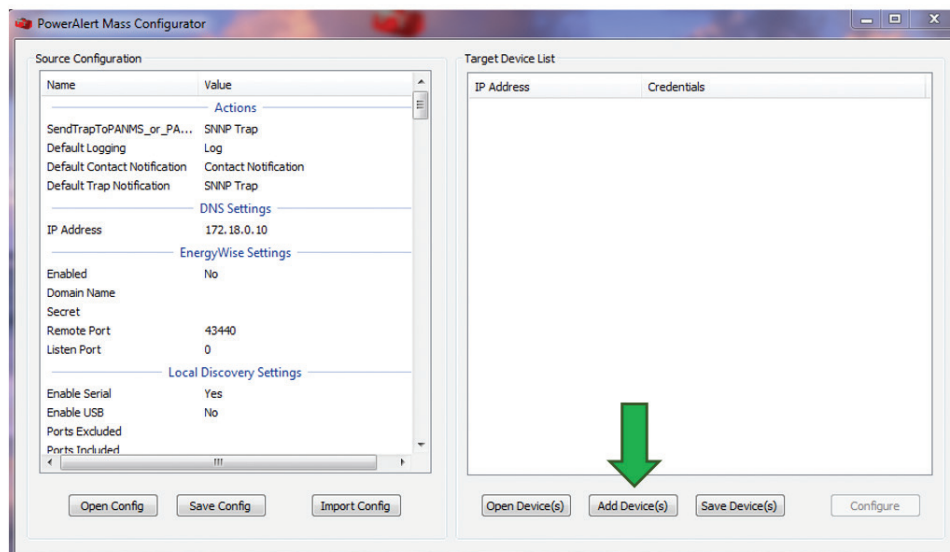


Once the source device has been located, the main utility screen will display its configuration information on the left side (see image below).

**Note:** There will be no notification if an incorrect IP address, User Name or Password is entered. Rather, the Source Configuration window will simply display no information.

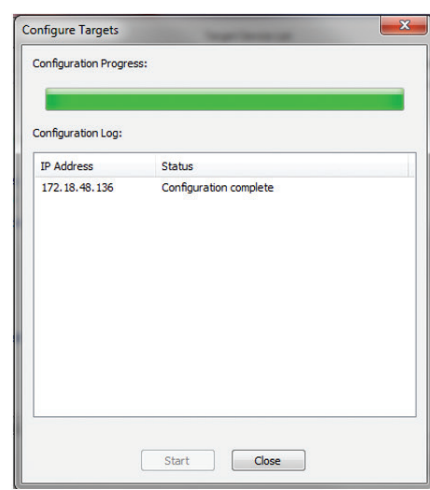
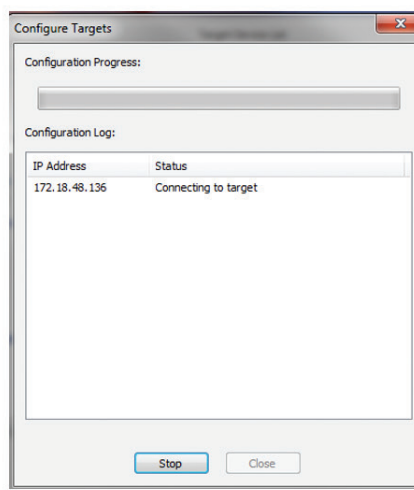
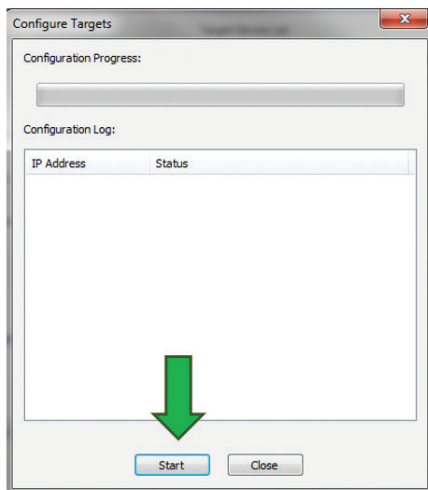
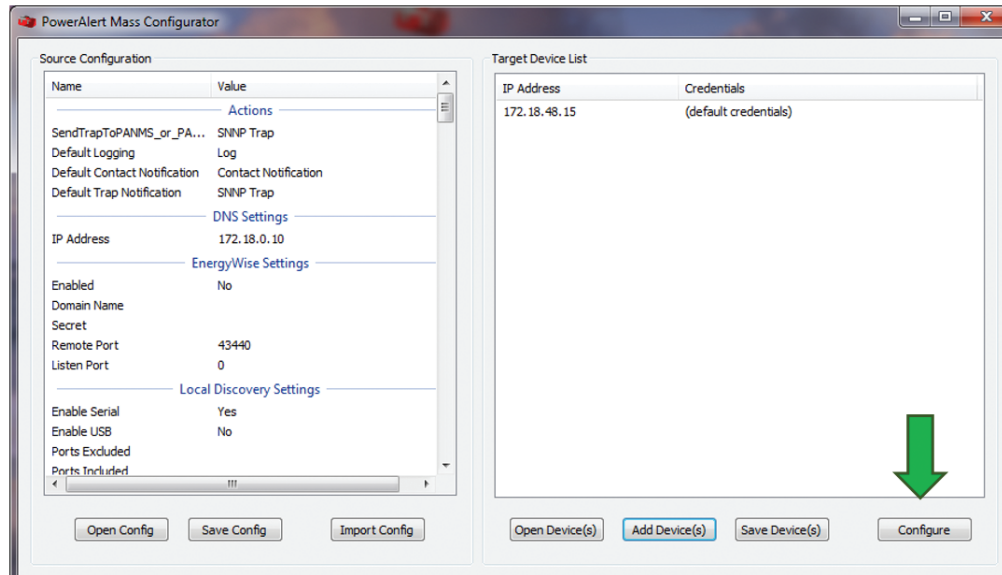
**STEP 3.** Choose the target devices by clicking the **Add Devices** button located at the bottom right. In the window that appears, a single device can be chosen by entering its IP address in the “IP Start Address” field, then clicking **OK**. Repeat this step for additional individual devices. All devices within an IP address range can also be chosen—check the “Enter an IP Range” box, then enter the starting and ending IP addresses. Click **OK**.

All selected devices will be displayed in the Target Device List. To remove a device from the list, right-click the device’s IP address and select “Remove Device”.



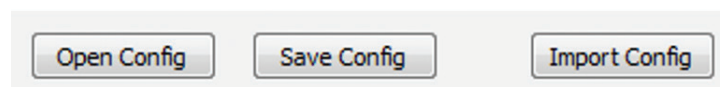
## Usage Instructions

**STEP 4.** Once all target devices have been selected, click the *Configure* button. In the Configure Targets window that appears, click *Start*. The window will display a progress bar and provide the option to terminate the process. When the process has finished, the Status field in the window will indicate “Configuration complete” for each target device successfully configured.



## For Advanced Users

Once STEP 2 has been completed, the imported configuration can be saved as an .XML file by clicking the *Save Config* button. The saved file can be modified using an XML editor. Please note that edited data is not validated. Errors in the file could cause failures when configuring target devices. Once all changes have been made and saved, the file can be chosen as the source configuration using the *Open Config* button, then navigating to and selecting the saved file.



## Frequently Asked Questions

1. Can I load a configuration from a device running v0061 onto a device using v0064 firmware?  
**Yes.**
2. Can I load a configuration from a device running v0064 onto a device using v0061 firmware?  
**Yes.**
3. Can I load a configuration from a device running v0064 onto a device using v0055 firmware?  
**No.**
4. Can I mass configure mixed model types, i.e. use a switched PDU as the source device and monitored PDUs as the target devices?  
**Yes – the utility will copy over only the attributes that are common to the model types. It will not copy any device-specific data.**
5. Can I mix device types, i.e. use a PDU as a source device and UPS (Web Cards) as the target devices?  
**Yes – the utility will copy over only the attributes that are common to the device types. It will not copy any device-specific data.**
6. Does the utility support SNMPv3 credentials?  
**No, not at this time.**

