

Owner's Manual

USB to Null Modem Serial Adapter Cable

Model: U209-18N-NULL

PROTECT YOUR INVESTMENT!

Register your product for quicker service
and ultimate peace of mind.

You could also win an ISOBAR6ULTRA
surge protector—a \$100 value!

www.tripplite.com/warranty



1111 W. 35th Street, Chicago, IL 60609 USA
www.tripplite.com/support

Copyright © 2016 Tripp Lite. All rights reserved.

Product Features

- Converts a USB port into an RS232 Null Modem serial port to connect a DTE serial device
- Solves DCE/DTE conflicts directly without requiring additional cross-wired serial cables or adapters
- COM Retention allows the same COM port values to be reassigned to the port in case a cable is disconnected or the system is rebooted
- FTDI chipset supports advanced features and compatibility
- Supports data transfer rates up to 256 Kbps
- Premium double-shielded cable eliminates cross-talk and reduces EMI/RFI interference
- Provides overcurrent protection
- Compatible with Windows®, Mac®, Linux® and Android™
- Hot-swappable
- External power not required

Package Includes

- U209-18N-NULL
- Driver CD
- Owner's Manual

System Requirements

- Computer with an available USB port
- Compatible with Windows, Mac, Linux and Android operating systems
- Compatible with Android devices (tablet/phones) with USB Host Mode (OTG) support and Android OS version 3.2 and above
- Android-powered devices will require a USB OTG cable to connect to the U209-18N-NULL

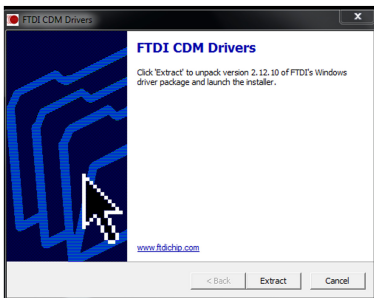
Installation

Note: The following instructions show how to install the driver on a Windows® 7 computer. The installation steps are similar for other Windows operating systems. For non-Windows operating systems, refer to the installation files on the driver CD or on www.triplite.com/support.

- 1** Without connecting the U209-18N-NULL, power on your computer and insert the driver CD that came with the product into your computer's CD ROM drive.
- 2** Click on the CD icon to access its file contents, then run the driver file appropriate for your OS.

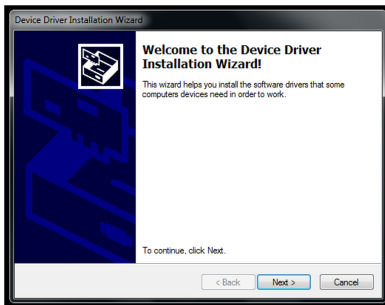
Installation

- 3 Before the driver installation program launches, an FTDI CDM Drivers window will appear. Click the *Extract* button.



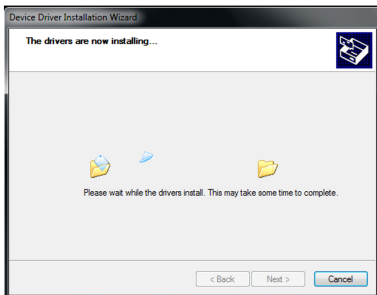
Installation

- 4 After extracting the FTDI CDM Drivers, the driver installer program will launch. Click the **Next** button to start the installation.



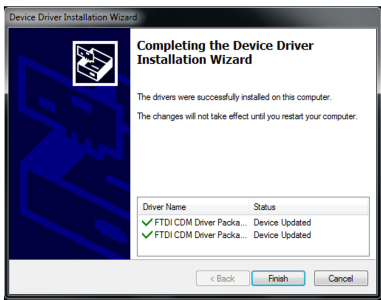
Installation

- 5 The driver installation will begin.



Installation

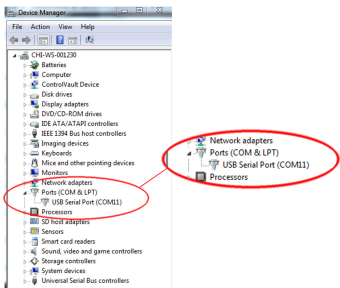
- 6 Once the installation process is complete, click the *Finish* button to close out the program.



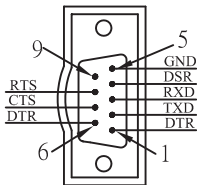
- 7 Connect the U209-18N-NULL to an available USB port on your computer. Windows will detect the adapter and assign it a COM port upon completing the installation.

Installation

- 8 To verify your adapter has been successfully installed, navigate to your computer's Control Panel and open the Device Manager screen. The adapter will appear in the Ports section with its assigned COM port next to it.



Pinout



8

Warranty and Product Registration

2-Year Limited Warranty

TRIPP LITE warrants its products to be free from defects in materials and workmanship for a period of two (2) years from the date of initial purchase. TRIPP LITE's obligation under this warranty is limited to repairing or replacing (at its sole option) any such defective products. To obtain service under this warranty, you must obtain a Returned Material Authorization (RMA) number from TRIPP LITE or an authorized TRIPP LITE service center. Products must be returned to TRIPP LITE or an authorized TRIPP LITE service center with transportation charges prepaid and must be accompanied by a brief description of the problem encountered and proof of date and place of purchase. This warranty does not apply to equipment, which has been damaged by accident, negligence or misapplication or has been altered or modified in any way.

EXCEPT AS PROVIDED HEREIN, TRIPP LITE MAKES NO WARRANTIES, EXPRESS OR IMPLIED, INCLUDING WARRANTIES OF MERCHANTABILITY AND FITNESS FOR A PARTICULAR PURPOSE.

Some states do not permit limitation or exclusion of implied warranties; therefore, the aforesaid limitation(s) or exclusion(s) may not apply to the purchaser.

EXCEPT AS PROVIDED ABOVE, IN NO EVENT WILL TRIPP LITE BE LIABLE FOR DIRECT, INDIRECT, SPECIAL, INCIDENTAL OR CONSEQUENTIAL DAMAGES ARISING OUT OF THE USE OF THIS PRODUCT, EVEN IF ADVISED OF THE POSSIBILITY OF SUCH DAMAGE. Specifically, TRIPP LITE is not liable for any costs, such as lost profits or revenue, loss of equipment, loss of use of equipment, loss of software, loss of data, costs of substitutes, claims by third parties, or otherwise.

Warranty and Product Registration

PRODUCT REGISTRATION

Visit www.triplite.com/warranty today to register your new Tripp Lite product. You'll be automatically entered into a drawing for a chance to win a FREE Tripp Lite product!*

* No purchase necessary. Void where prohibited. Some restrictions apply. See website for details.

FCC Notice, Class B

This device complies with part 15 of the FCC Rules. Operation is subject to the following two conditions: (1) This device may not cause harmful interference, and (2) this device must accept any interference received, including interference that may cause undesired operation.

Note: This equipment has been tested and found to comply with the limits for a Class B digital device, pursuant to part 15 of the FCC Rules. These limits are designed to provide reasonable protection against harmful interference in a residential installation. This equipment generates, uses and can radiate radio frequency energy and, if not installed and used in accordance with the instructions, may cause harmful interference to radio communications. However, there is no guarantee that interference will not occur in a particular installation. If this equipment does cause harmful interference to radio or television reception, which can be determined by turning the equipment off and on, the user is encouraged to try to correct the interference by one or more of the following measures:

- Reorient or relocate the receiving antenna.
- Increase the separation between the equipment and receiver.
- Connect the equipment into an outlet on a circuit different from that to which the receiver is connected.
- Consult the dealer or an experienced radio/TV technician for help.

Warranty and Product Registration

Any changes or modifications to this equipment not expressly approved by Tripp Lite could void the user's authority to operate this equipment.

WEEE Compliance Information for Tripp Lite Customers and Recyclers (European Union)



Under the Waste Electrical and Electronic Equipment (WEEE) Directive and implementing regulations, when customers buy new electrical and electronic equipment from Tripp Lite they are entitled to:

- Send old equipment for recycling on a one-for-one, like-for-like basis (this varies depending on the country)
- Send the new equipment back for recycling when this ultimately becomes waste

Tripp Lite has a policy of continuous improvement. Specifications are subject to change without notice.



Manufacturing
Excellence.

1111 W. 35th Street, Chicago, IL 60609 USA
www.tripplite.com/support