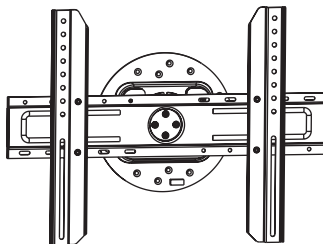


Owner's Manual

Portrait/Landscape Fixed Flat Screen Wall Mount

MODEL: DWM3770PLX



CAUTION: DO NOT EXCEED MAXIMUM LISTED WEIGHT CAPACITY. SERIOUS INJURY OR PROPERTY DAMAGE MAY OCCUR!



200 x 200
300 x 300
400 x 200
400 x 400
600 x 400



Este manual esta disponible en español en la página de Tripp Lite: www.tripplite.com

Ce manuel est disponible en français sur le site Web de Tripp Lite : www.tripplite.com

Русскоязычная версия настоящего руководства представлена на веб-сайте
компании Tripp Lite по адресу: www.tripplite.com

Dieses Handbuch ist in deutscher Sprache auf der Tripp Lite-Website verfügbar:
www.tripplite.com

PROTECT YOUR INVESTMENT!

Register your product for quicker service
and ultimate peace of mind.

You could also win an ISOBAR6ULTRA
surge protector—a \$100 value!

www.tripplite.com/warranty



1111 W. 35th Street, Chicago, IL 60609 USA • www.tripplite.com/support

Copyright © 2016 Tripp Lite. All rights reserved.

NOTE: Read the entire instruction manual before you start installation and assembly.



WARNING

- Do not begin the installation until you have read and understood the instructions and warnings contained in this manual. If you have any questions regarding any of the instructions or warnings, please visit www.triplite.com/support.
- This mounting bracket was designed to be installed and utilized ONLY as specified in this manual. Improper installation of this product may cause damage or serious injury.
- This product should only be installed by someone of good mechanical ability, with basic building experience and a full understanding of this instruction manual.
- Make sure that the mounting surface can safely support the combined load of the equipment and all attached hardware and components.
- If mounting to wood wall studs, make sure that mounting screws are anchored into the center of the studs. The use of a stud finder is highly recommended.
- Always use an assistant or mechanical lifting equipment to safely lift and position equipment.
- Tighten screws firmly, but do not over-tighten. Over-tightening screws can damage the items, greatly reducing their holding power.
- This product is intended for indoor use only. Using this product outdoors could lead to product failure and personal injury.

Warranty and Product Registration

5-Year Limited Warranty

Seller warrants this product, if used in accordance with all applicable instructions, to be free from original defects in material and workmanship for a period of 5 years from the date of initial purchase. If the product should prove defective in material or workmanship within that period, Seller will repair or replace the product, in its sole discretion.

THIS WARRANTY DOES NOT APPLY TO NORMAL WEAR OR TO DAMAGE RESULTING FROM ACCIDENT, MISUSE, ABUSE OR NEGLIGENCE. SELLER MAKES NO EXPRESS WARRANTIES OTHER THAN THE WARRANTY EXPRESSLY SET FORTH HEREIN. EXCEPT TO THE EXTENT PROHIBITED BY APPLICABLE LAW, ALL IMPLIED WARRANTIES, INCLUDING ALL WARRANTIES OF MERCHANTABILITY OR FITNESS, ARE LIMITED IN DURATION TO THE WARRANTY PERIOD SET FORTH ABOVE; AND THIS WARRANTY EXPRESSLY EXCLUDES ALL INCIDENTAL AND CONSEQUENTIAL DAMAGES. (Some states do not allow limitations on how long an implied warranty lasts, and some states do not allow the exclusion or limitation of incidental or consequential damages, so the above limitations or exclusions may not apply to you. This warranty gives you specific legal rights, and you may have other rights which vary from jurisdiction to jurisdiction).

WARNING: The individual user should take care to determine prior to use whether this device is suitable, adequate or safe for the use intended. Since individual applications are subject to great variation, the manufacturer makes no representation or warranty as to the suitability or fitness of these devices for any specific application.

PRODUCT REGISTRATION

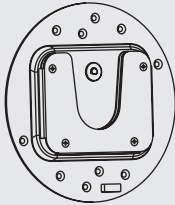
Visit www.triplite.com/warranty today to register your new Tripp Lite product. You'll be automatically entered into a drawing for a chance to win a FREE Tripp Lite product!*

* No purchase necessary. Void where prohibited. Some restrictions apply. See website for details.

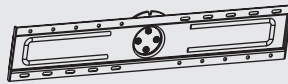
Tripp Lite has a policy of continuous improvement. Specifications are subject to change without notice.

Component Checklist

IMPORTANT: Ensure that you have received all parts according to the component checklist prior to installing. If any parts are missing or faulty, visit www.tripplite.com/support for service.



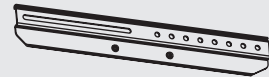
Wall Plate



Universal Plate



Left Adapter Bracket

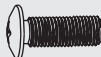


Right Adapter Bracket

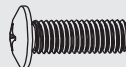
Package M



M5X14 (x4)



M6X14 (x4)



M8X20 (x4)



M6X30 (x4)



M8X30 (x4)



Washer (x4)



Small Spacer (x8)



Big Spacer (x4)

Package P



4 mm Hex Key



M6X10 (x4)



D6 Washer (x4)

Package W

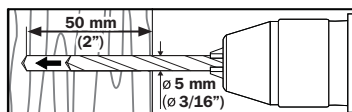


Anchor Bolt (x4)

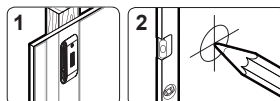


Concrete Anchor (x4)

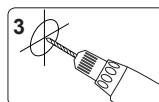
1a. Mount on Wood Stud Wall



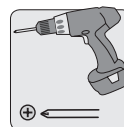
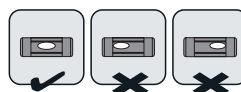
Find a wood stud location for mounting the wall mount



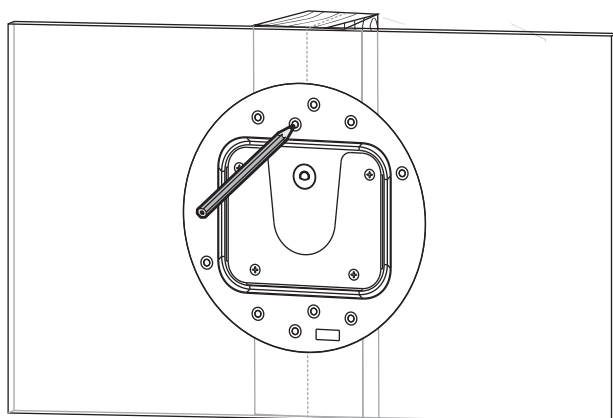
Find and mark the exact location of the mounting holes



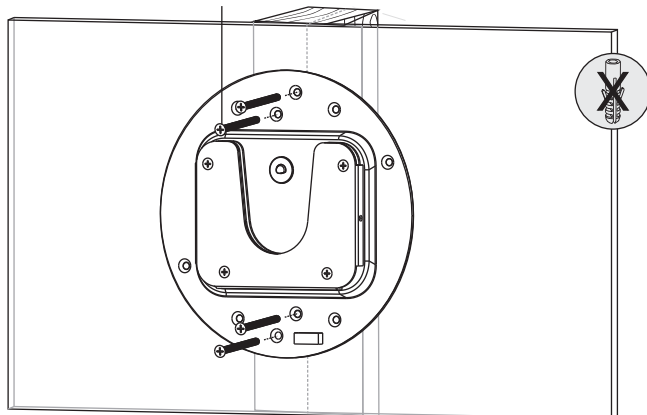
Drill pilot holes



Screw the wall mount onto the wall



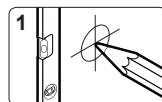
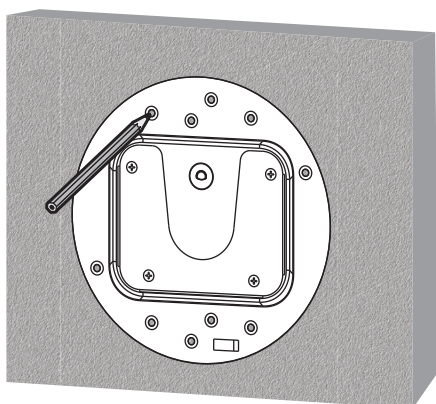
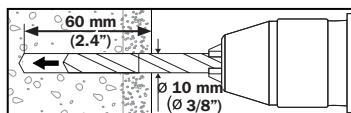
Anchor Bolt



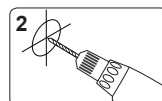
WARNING

- Make sure that mounting screws are anchored into the center of the studs. Use of a stud finder is highly recommended.
- Installers are responsible to provide hardware for other types of mounting situations.
- Installers must verify that the supporting surface will safely support the combined load of the equipment and all attached hardware and components.

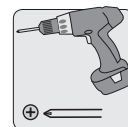
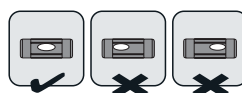
1b. Mount on Solid Brick or Concrete Block



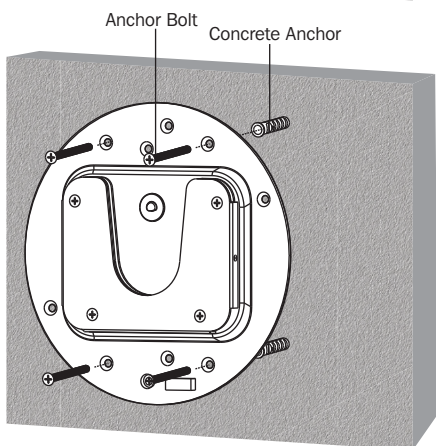
Find and mark the exact location of mounting holes



Drill pilot holes



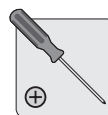
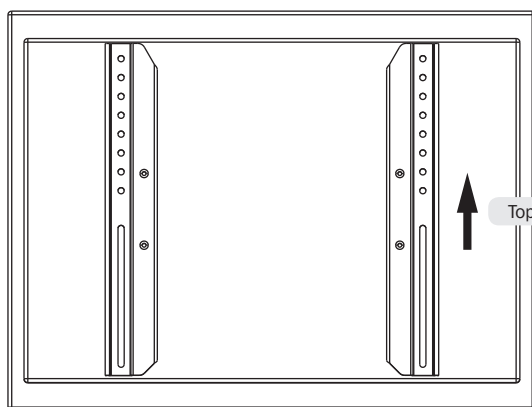
Screw the wall mount onto the wall



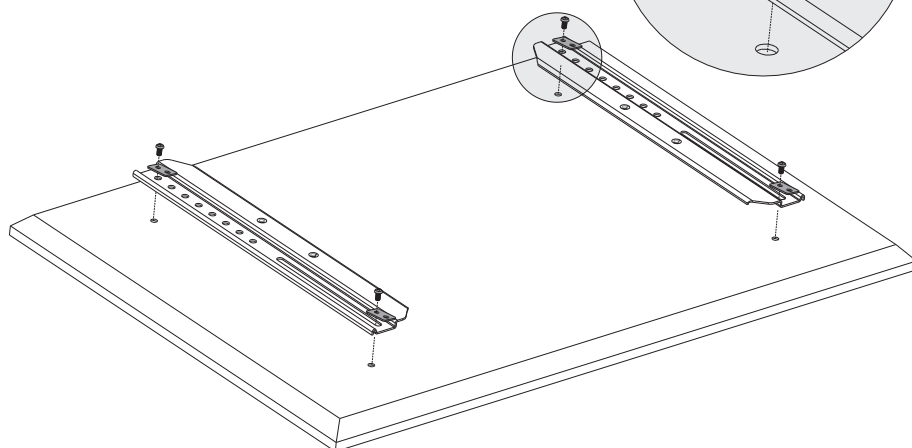
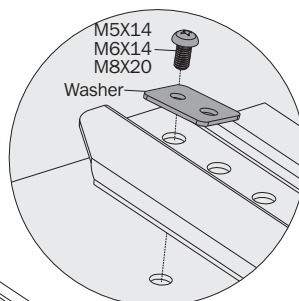
WARNING

- When installing wall mounts onto a concrete masonry unit (also known as a CMU or “cinder block”), verify that the actual concrete thickness is at least 35 mm (1-3/8 inch) in order to hold the two concrete anchors. **DO NOT DRILL INTO MORTAR JOINTS!** Be sure to mount the wall-mount plate with the included concrete anchors and anchor bolts onto a solid section of the block. The solid sections can generally be found 25 mm (1 inch) toward the middle of the block from either end. An electric drill on a slow setting is suggested to drill the hole rather than a hammer drill so as to avoid breaking out the back of the hole when entering a hollow section.
- Installers must verify that the supporting surface will safely support the combined load of the equipment and all attached hardware and components.

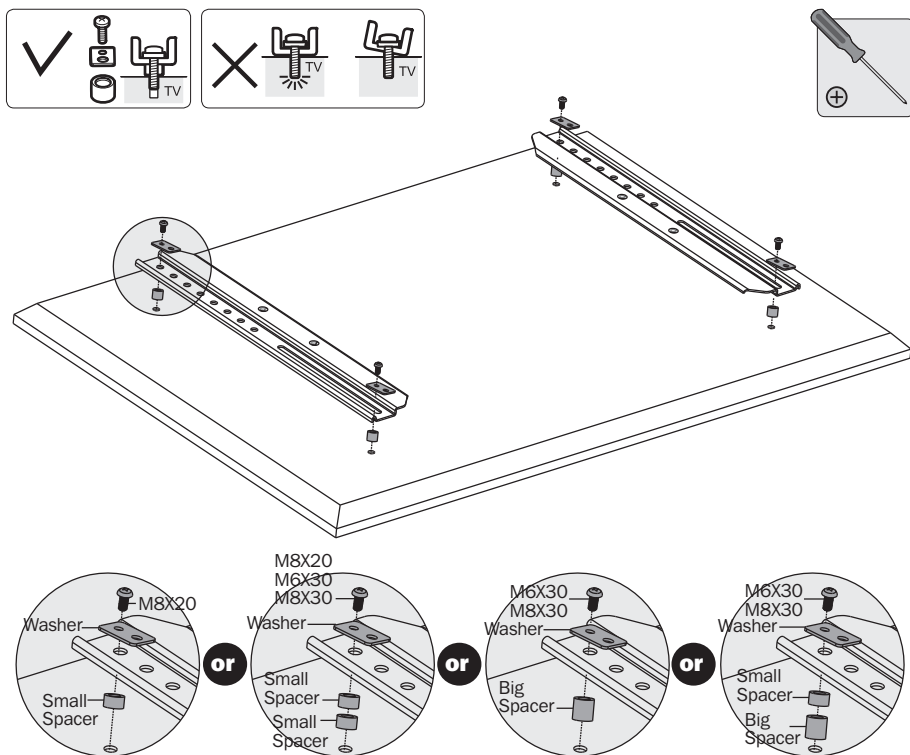
2. Installing the Adapter Brackets



2a. For Flat Back Screen



2b. For Recessed Back Panel or to Access A/V Inputs



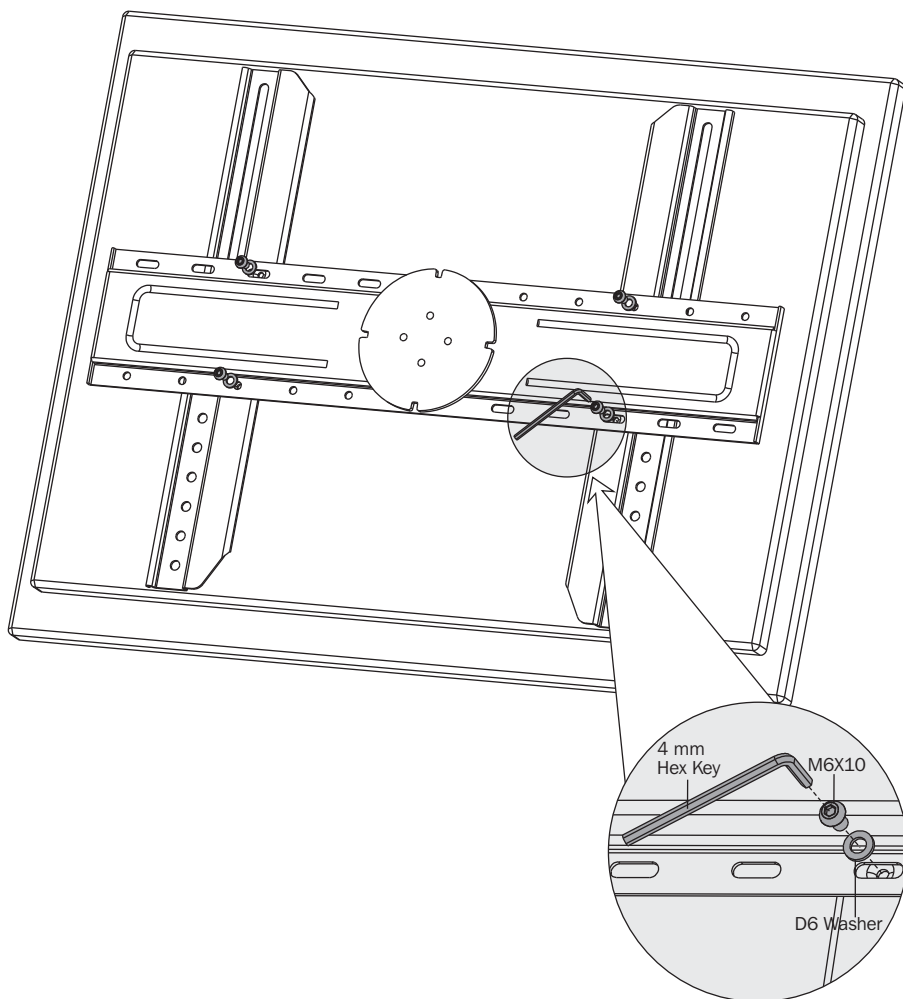
Note: Choose appropriate screws, washers and spacers (if necessary) according to the screen type.

- Position the adapter brackets as close as possible to the center of the display.
- Screw the adapter brackets onto the display.



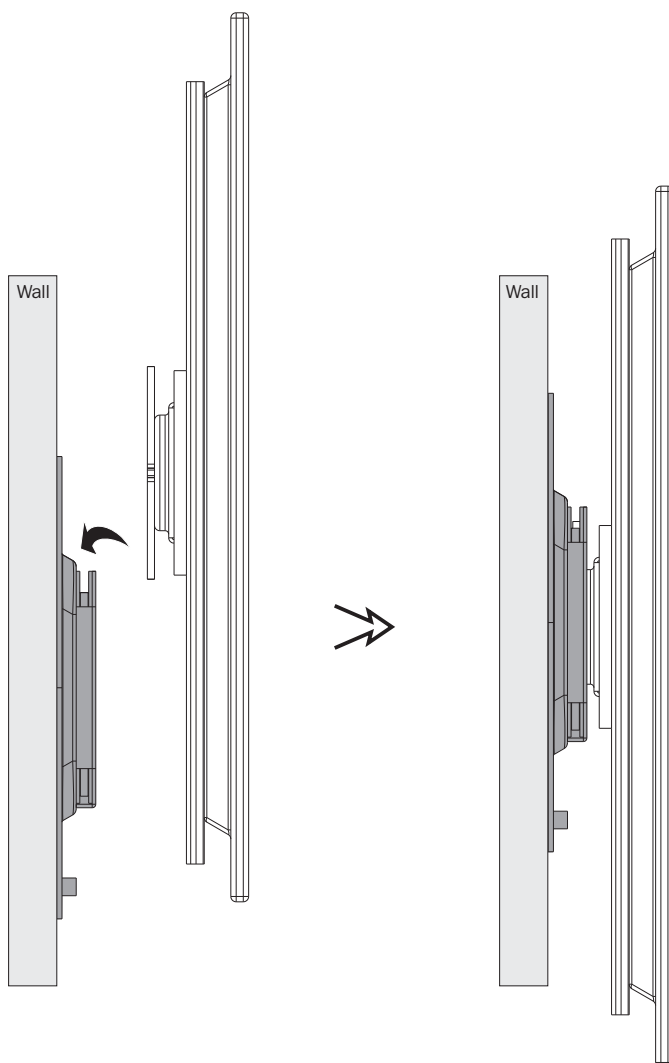
Do not over-tighten screws.

3. Installing the Universal Plate



Using M6X10 screws, D6 Washers and the 4 mm Hex Key, secure the Universal Plate to the adapter brackets.

4. Hanging the Display onto the Wall Plate



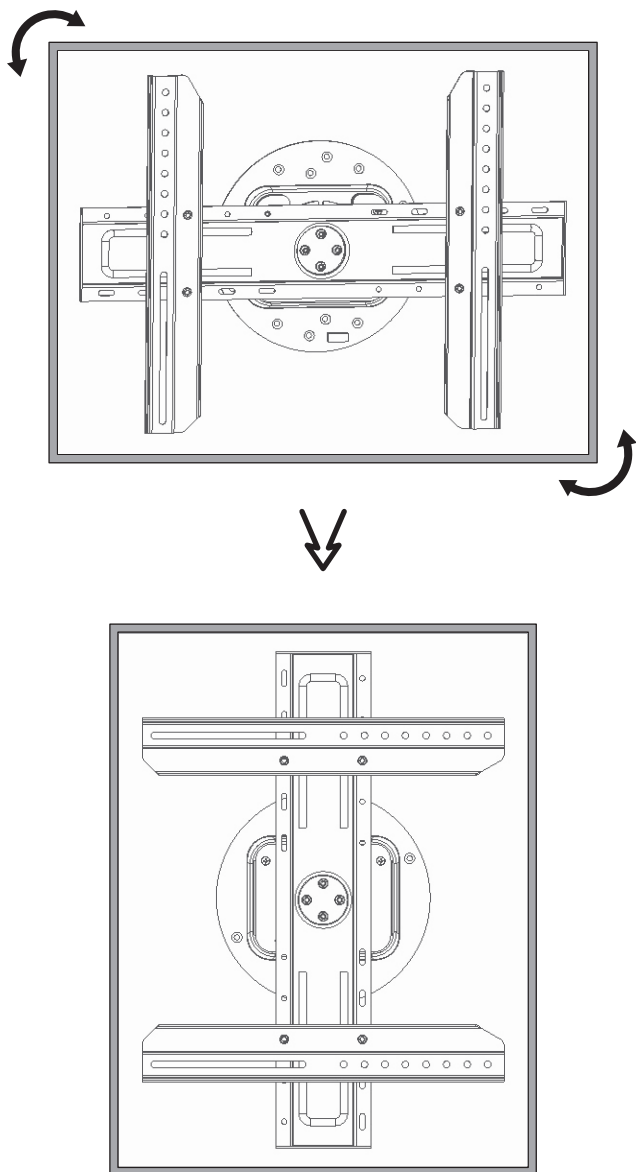
Using an assistant or mechanical lifting equipment, lift the display with attached Universal Plate and slide the Universal Plate into the mounted Wall Plate's rail.

Note: For easier installation, slightly tilt the display horizontally with the Universal Plate facing upward.



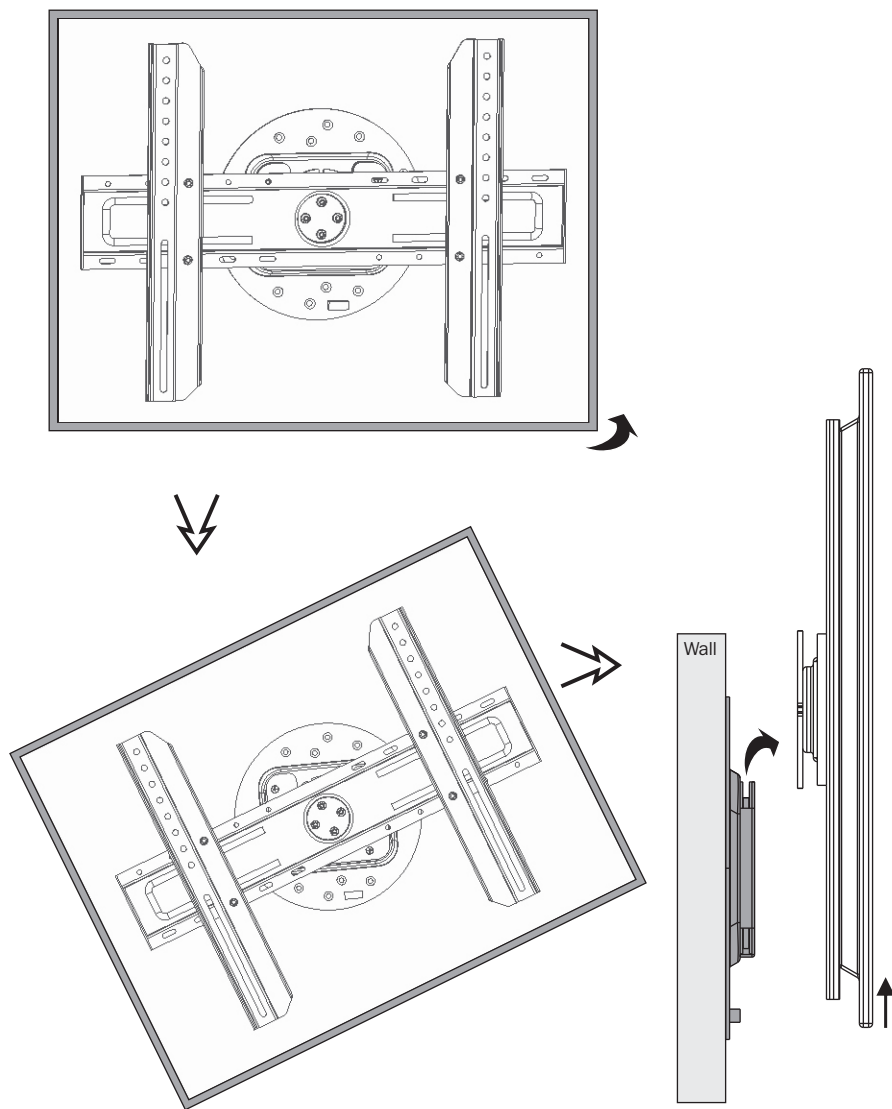
Make sure the display is securely attached to the Wall Plate before releasing.

5. Adjustment



Firmly hold the display's upper edge and opposite lower edge and turn the display in the desired direction. The pitching angle can be adjusted in 0°, 90°, 180° and 270° positions.

6. Removing the Display



To remove the display from the Wall Plate, turn the display to an incline position and lift upward and inward.

Note: Make sure the display's rotation angle is in an incline position, NOT in a horizontal or vertical position.

Maintenance

- Check that the Wall Plate and brackets are secure and safe to use at regular intervals (at least every three months).
- For any additional questions, visit www.tripplite.com/support.



1111 W. 35th Street, Chicago, IL 60609 USA • www.tripplite.com/support