

Quick Start Guide

SDT Connector

Tripp Lite's SDT Connector is a software tool that provides secure point-and-click local and remote access to your Tripp Lite Console Server.

Note: *The SDT Connector is not required to operate your Console Server.*

This Quick Start Guide walks you through installation and basic configuration of the SDT Connection client. For more details, please refer to the SDT Connector chapter in the Owner's Manual, which can be downloaded from www.tripplite.com/support.

Note: *Before continuing, complete the initial setup steps outlined in your Console Server's Quick Start Guide.*

PROTECT YOUR INVESTMENT!

Register your product for quicker service
and ultimate peace of mind.

You could also win an
ISOBARGULTRA surge protector—
a \$50 value!



www.tripplite.com/warranty



1111 W. 35th Street, Chicago, IL 60609 USA • www.tripplite.com/support

Copyright © 2014 Tripp Lite. All rights reserved. All trademarks are the property of their respective owners.

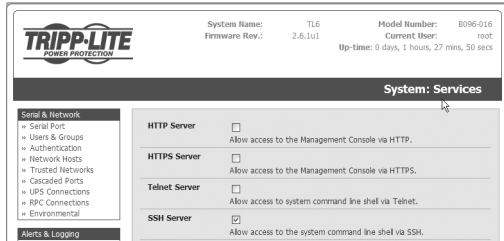
Configuring the Console Server

The SDT Connector uses SSH to connect securely. Ensure this service is running on the Console Server (it is enabled by default):

1. Browse to the Console Server.
2. Select *System:Services*.
3. Be sure *SSH Server* is enabled.
4. Click **Apply**.

Add Connected Network Devices and Servers as Network Hosts

1. For each host, select *Serial & Network: Network: Network Hosts* and click **Add Host**.
2. Enter the *IP Address/DSN Name* of the host, a descriptive *Host Name* and optional *Description/Notes*.
3. Edit the *Permitted Services* for use with the SDT Connector (e.g., Remote Desktop/RDP [TCP port 3389], VNC [TCP port 5900] or add custom TCP or UDP port numbers).
4. Click **Apply**.



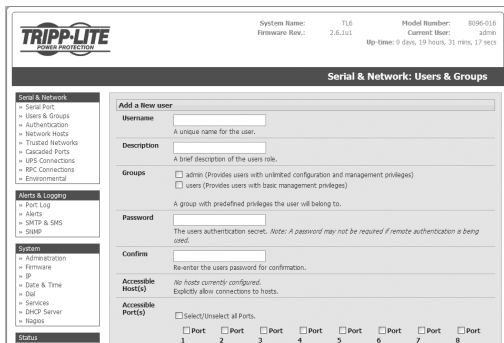
Configuring Serial Ports

By default, all serial ports on the B092-016 are set to UPS (PowerAlert) Device mode, allowing any Tripp Lite devices attached by serial port to be detected and auto-configured. You will need to manually configure any port you wish to use to manage any other device. For all other Tripp Lite console servers, the serial ports are set to Console Server mode.

1. Select *Serial & Network: Serial Port* and click **Edit** on the port to be configured.
2. Set the common settings and the mode as required.
3. Click **Apply**.

Add a User with Permission to Access the Newly Added Network Hosts and Console Server Serial Ports

1. Select *Serial & Network: Users & Groups* and click **Add User**.
2. Enter a *Username* and enter and confirm a *Password*.
3. Check the *Accessible Hosts* and *Accessible Ports* this user will access using the SDT Connector.
4. Click **Apply**.

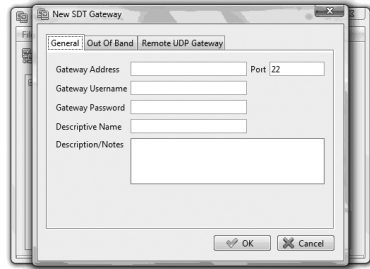


Installing the SDT Connector Client

The SDT Connector install files are available for download from www.triplite.com/support.

1. If you are running Windows, use the .exe file. If you are running Linux, Solaris, UNIX or Mac OS X, extract the .tar.gz file.
2. Double click the **SDTConnector** icon (for Windows), or from the command line run: `./SDTConnector` (for other operating systems)

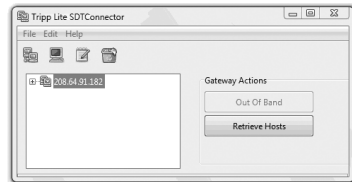
Note: The system running SDT Connector must have Java 1.4.2 or later installed. This is a free download from <http://java.sun.com/>.



3. Click **File**, then **New Gateway**.
4. Enter the IP address of the Console Server in *Gateway Address*.
5. Enter the credentials of the user (that you added on the Console Server) in *Gateway Username* and *Gateway Password*.
6. Enter an optional *Descriptive Name*, click **Add**.

Auto-Configure & Connect

1. In the left hand column, select the newly added Gateway.
2. Click **Retrieve Hosts**.
3. SDT Connector will connect to the Console Server and retrieve all accessible hosts and serial ports that the user has access privileges to.



4. Once complete, click the + to the left of the gateway's icon to expand the accessible hosts and accessible serial ports.

Note: The Console Server's Management Console and serial ports are grouped under the Local Services host.

5. Simply point at the host to be accessed and **click** on the service to be used in accessing that host.
6. An SSH tunnel will then automatically be set up to the Console Server with the appropriate ports redirected through to the host, and the appropriate local client application is launched pointing at the local endpoint of the redirection.



Note: The Retrieve Hosts function described in this step can be used for any user added on the Console Server – however SDT Connector will not Retrieve Hosts for the root user. It is recommended that this account is only used for initial setup of the console server, and to add an initial admin account for administration of the Console Server.

Advanced Configurations

The SDT Connector offers advanced functions, including:

- Manually add hosts and specify accessible services for the host (click **File, New Host**)
- Add custom services and local clients for connecting to them (click **Edit, Preferences**)
- Distribution of pre-configured SDT Connector configuration files for backup or for importing into other SDT Connector clients (click **File, Import/Export Preferences**)
- Out-of-band (OoB) dial-in or network access to the Console Server if the default network connection is not available (**Edit gateway, Out Of Band**)
- Other advanced features, such as *Public Key Authentication* and *Nagios integration*, are covered in detail in the SDT Connector chapter in the User Manual on the CD-ROM

Note: *Each SDT Connector client can be configured to access multiple remote Console Servers, each of which provides the gateway to hundreds of serially or network connected hosts. Similarly, hundreds of SDT Connector clients can be configured to access a single Console Server.*

Tripp Lite follows a policy of continuous improvement. Product specifications are subject to change without notice.



1111 W. 35th Street, Chicago, IL 60609 USA • www.tripplite.com/support