

Owner's Manual

Triple-Display USB-C Docking Station

Models: U442-DOCK8-B and U442-DOCK8-BINT

Este manual está disponible en español en la página de Tripp Lite:
tripplite.com/support

Ce manuel est disponible en français sur le site Web de Tripp Lite :
tripplite.com/support

Русскоязычная версия настоящего руководства представлена на
веб-сайте компании Tripp Lite по адресу: tripplite.com

Dieses Handbuch ist in deutscher Sprache auf der Tripp Lite-Website
verfügbar: tripplite.com

WARRANTY REGISTRATION

Register your product today and be
automatically entered to win an ISOBAR®
surge protector in our monthly drawing!

tripplite.com/warranty



1111 W. 35th Street, Chicago, IL 60609 USA • tripplite.com/support

Copyright © 2021 Tripp Lite. All rights reserved. USB Type-C® and
USB-C® are registered trademarks of USB Implementers Forum.

Product Features

- HDMI and DisplayPort connectors each support single-monitor 4K applications up to 3840 x 2160 @ 60 Hz*
- Extends 1080p desktop image across 3 external screens at the same time at resolutions up to 1920 x 1080 @ 30 Hz*
- Extends 1080p desktop image across 2 external screens at the same time at resolutions up to 1920 x 1080 @ 60 Hz*
- RJ45 port supports true 10/100/1000 Mbps (1 Gbps) network speeds when Wi-Fi is weak or unavailable
- USB-C PD 3.0 port supports 85W power output for charging host device
- USB-A hub ports support USB 3.2 Gen 2 speeds up to 10 Gbps; one dedicated port supports up to 5V 1.5A (7.5W) for charging mobile devices, 2.4A for Apple® devices
- USB-C hub port supports USB 3.2 Gen 2 speeds up to 10 Gbps for reading, writing and transferring data
- 3.5 mm microphone/speaker combo port supports 2.1-channel audio
- Plug-and-play operation with no software required for easy, immediate installation

*Maximum resolution is determined by what your connected device can support. See **Cable Matrix** for resolution breakdown.

Package Contents

- U442-DOCK8-B or U442-DOCK8-BINT
- USB-C to USB-C Cable, 1m (3.3 ft)
- External Power Supply
(Input: 100 -240V, 50/60 Hz, 2A; Output: 20V 5A)
U442-DOCK8-B: C5 to NEMA 5-15P Cord
U442-DOCK8-BINT: International Power Cords
(BS 1363 UK, CEE 7/7 EU)
- Owner's Manual

Optional Accessories

- N201-Series Cat6 Gigabit Snagless Patch Cables
- P312-Series 3.5 mm Mini Stereo Audio Cables
- P569-Series High-Speed HDMI Cables
- P580-Series DisplayPort Cables with Latches
- U420-Series USB 3.2 Gen 2 C/C Cables
- U428-Series USB 3.2 Gen 1 A/C Cables
- M100-Series USB Sync/Charge A/Lightning Cables

Product Overview

Front



- 1 Power:** Turns the unit off and on.
Blue LED indicates when power is turned on.
- 2 3.5 mm Mini Stereo Combo Port:** Connects user-supplied speaker or microphone.
- 3 USB-C Data Port:** Transmits data at USB 3.2 Gen 2 speeds up to 10 Gbps.
- 4 USB-A Charging Port:** Supports 5V 1.5A (7.5W) charging for mobile devices, 2.4A for Apple devices.
- 5 Anti-Theft Lock:** Connects your computer/laptop security-cable chain lock.

Product Overview

Rear



- 6 DC Power Jack:** Connect the included external power supply to both this port and an AC outlet.
- 7 USB-C PD Charging Port:** Connects to the host device with the included USB-C cable.
- 8 (2x) DisplayPort Outputs:** Connect to DisplayPort monitors with user-supplied cables.
- 9 HDMI Output:** Connects to HDMI monitor with user-supplied cable.
- 10 RJ45 Port:** Connects to Gigabit Ethernet network with user-supplied Cat6 cable.
- 11 (2x) USB-A Hub Ports:** Connects USB peripherals or devices at USB 3.2 Gen 2 speeds up to 10 Gbps.

Cable Matrix

DP1.2 HBR2 Platform			
Ports	HDMI	DP1	DP2
1 External Display Connected	4K/30 Hz	N/A	N/A
	N/A	4K/30 Hz	N/A
	N/A	N/A	4K/30 Hz
2 External Displays Connected	1080p/60 Hz	1080p/60 Hz	N/A
	1080p/60 Hz	N/A	1080p/60 Hz
	N/A	1080p/60 Hz	1080p/60 Hz
3 External Displays Connected	1080p/30 Hz	1080p/30 Hz	1080p/30 Hz
DP1.4 HBR3 Platform			
Ports	HDMI	DP1	DP2
1 External Display Connected	4K/60 Hz	N/A	N/A
	N/A	4K/60 Hz	N/A
	N/A	N/A	4K/60 Hz
2 External Displays Connected	1440p/60 Hz	1440p/60 Hz	N/A
	1440p/60 Hz	N/A	1440p/60 Hz
	N/A	1440p/60 Hz	1440p/60 Hz
3 External Displays Connected	1080p/60 Hz	1080p/60 Hz	1080p/60 Hz
DP1.4 HBR3 Platform with DSC Support			
Ports	HDMI	DP1	DP2
1 External Display Connected	4K/60 Hz	N/A	N/A
	N/A	4K/60 Hz	N/A
	N/A	N/A	4K/60 Hz
2 External Displays Connected	4K/60 Hz	4K/60 Hz	N/A
	4K/60 Hz	N/A	4K/60 Hz
	N/A	4K/60 Hz	4K/60 Hz
3 External Displays Connected	4K/30 Hz	4K/30 Hz	4K/30 Hz


Installation

Installation Notes

- After all devices are connected to the unit, be sure the power adapter is properly connected and the power button is turned on.
- Connect the host computer or laptop to the U442-DOCK8-B or U442-DOCK8-BINT USB-C PD Charging port using the included USB-C cable. This cable will charge and power the host device.
- Screenshots may vary based on operating system.
- The computer or laptop will keep your previous display settings every time you power on/off.
- Check your computer or laptop's display settings and set up in Extend Mode for normal installation.
- If you change monitors, you may need to reset the display settings.
- Some 4K monitors will occupy the entire 4K bandwidth and cause the third connected display to function incorrectly.
- If your system runs Mac OS, external monitors connected will only support Mirror Mode (all displays will have the same output).
- If your system is a Windows system and supports MST Mode, refer to below MST installation notes.


Installation

Single External Display Installation

1X 1x External displays + 1x NB screen	Resolution (NB)	
	1080p @ 60 Hz	
	Resolution (Monitor)	
	HBR2	2160p @ 30 Hz
	HBR3	2160p @ 60 Hz

- A. Connect an HDMI or DisplayPort cable (see **Optional Accessories**) between the U442-DOCK8-B and a compliant display.

Double Extended External Display Installation

	Resolution (NB)	
	1080p @ 60 Hz	
	Resolution (Monitor)	
	1080p @ 60 Hz	1080p @ 60 Hz

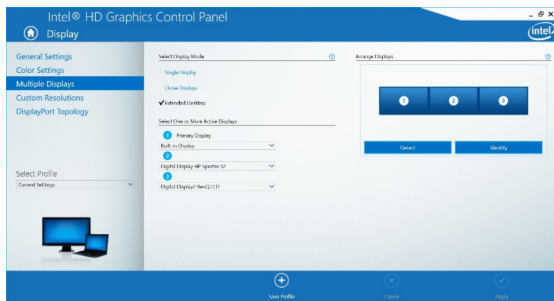
- A. Connect either both DisplayPort outputs or one DisplayPort and one HDMI port to compliant displays.
- B. In desktop mode, right-click the desktop and select **Graphics Properties**.

Installation

C. Click **Display Settings**.

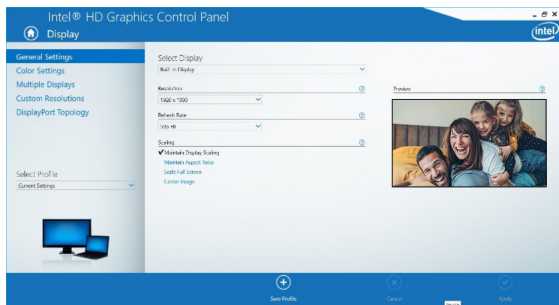


D. In **Multiple Displays**, click **Identify Your Monitors**.



Installation

- E. In **General Settings**, adjust the extended monitor resolution to 1920 x 1080 and the refresh rate to 60 Hz. Click **Apply** to save settings.
Note: The primary display default is the laptop screen. Displays 2 and 3 should be extended monitor.



- F. In Dual Extended mode, a 4K monitor will automatically downgrade to 1080p @ 60 Hz to provide the best video quality.



Resolution (NB)

1080p @ 60 Hz

Resolution (Monitor)

1080p @ 60 Hz

1080p @ 60 Hz

- G. If your monitor has a fixed resolution of 4K @ 30 Hz, your second monitor will automatically downgrade to 800 x 600 or may not even work at all.

Installation



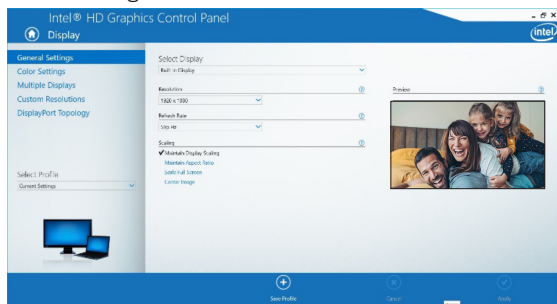
Resolution (NB)

1080p @ 60 Hz

Resolution (Monitor)

4K @ 30 Hz	X
4K @ 30 Hz	800 x 600
1080p @ 60 Hz	1080p @ 60 Hz

H. To fix this, go to **General Settings** and adjust the extended monitor resolution to 1920 x 1080 and the refresh rate to 60 Hz. Click **Apply** to save settings.



Installation

Triple Extended External Display Installation



Max. Resolution (Monitor)

1080p @ 30 Hz

1080p @ 30 Hz

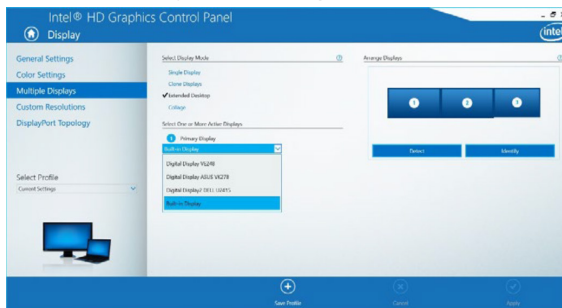
1080p @ 30 Hz

- A. Connect all video ports to compliant displays. Only 2 of the 3 displays will work right away.
- B. In desktop mode, right-click the desktop and select **Graphics Properties**.
- C. Click **Display Settings**.

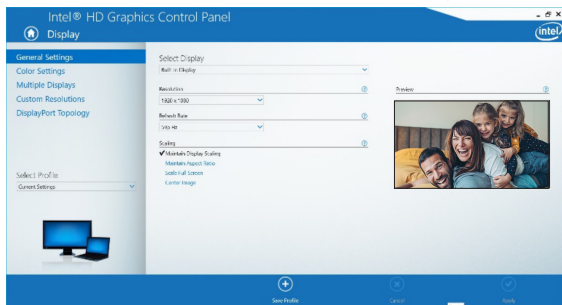


Installation

- D. In **Multiple Displays**, click **Identify Your Monitors**.
- E. Click the Primary Display dropdown box, and select the third active monitor. Click **Apply** to save settings.



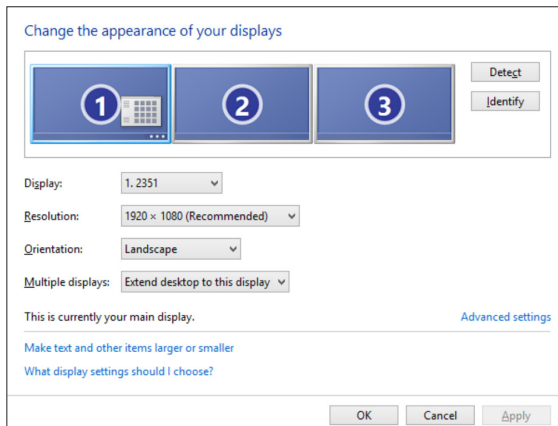
- F. In **General Settings**, adjust the extended monitor resolution to 1920 x 1080 and the refresh rate to 30 Hz. Click **Apply** to save settings.



Installation

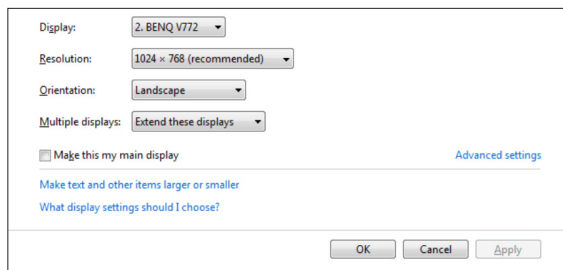
Multi-Monitor Configuration in MST Mode

- A. Be sure to first follow the above installation procedures.
- B. Once the extra monitors are connected, they can be configured to Extend Mode, Mirror Mode or Set the Primary Display.
- C. Go to **Display Settings** and select Screen Resolution.



- Extend Mode steps
 - a) Always refer to the Multi-Monitor Configuration section to bring up the configuration window.
 - b) In the Display dropdown menu, select the preferred monitor.
 - c) Select **Multiple Displays > Extend these displays**
 - d) Click **OK** to confirm and exit.
 - e) Once the setting is completed, drag and drop the application icons or the opened windows to the add-on monitor.

Installation



- Mirror Mode steps
 - a) Always refer to the Multi-Monitor Configuration section to bring up the configuration window
 - b) In the Display dropdown menu, select the preferred monitor.
 - c) Select **Multiple Displays > Duplicate these displays**
 - d) Click **OK** to confirm and exit.
- Set the Primary Display steps
 - a) Always refer to the Multi-Monitor Configuration section to bring up the configuration window.
 - b) In the Display dropdown menu, select the preferred monitor.
 - c) Check the **Make this my Main Display** box. **Note:** *For some computers, you may need to disable the main display by unchecking the Extend the desktop onto this monitor box or the Extend my Windows desktop onto this monitor box.*
 - d) Click **OK** to confirm and exit.

Installation

Troubleshooting for MST Mode

- **Did your cursor disappear?** If the status remains in Extend Mode, but the U442-DOCK8-B or U442-DOCK8-BINT is disconnected, the desktop will still be panned to the add-on monitor. The cursor may not be found on the primary monitor in such a case. If it happens, connect the add-on monitor through the docking station again or keep moving the mouse.
- **Video playback issues in Extend Mode?** If the video playback quality is poor, please use the playback on the primary monitor instead of the add-on monitor.

Installation

Non-Video Port Installation

Note: Be sure the power adapter is properly connected and the power button of the unit is turned on. This should occur once all your devices are properly plugged in.

- Connect up to 3 USB-A peripherals including speeds up to 10 Gbps. The USB-A dedicated charging port supports up to 5V 1.5A (7.5W) of charging power.
- Connect an Ethernet network through the RJ45 port to achieve speeds up to 10/100/1000 Mbps (1 Gbps).
- Connect the 3.5 mm Mini Stereo port to a headset, microphone or speaker. If the audio is not automatically changed to USB Audio Device, open the control panel and select the hardware and sound icon. Then click **Sound > Manage Audio Devices** and select **USB Audio Device**.
- Transfer data up to 10 Gbps using the USB-C data port.
- (Optional) If you have a security-cable chain lock, connect it to the anti-theft lock port.

Specifications

Input	USB-C (Female)
Output(s)	(x2) DisplayPort (Female)
	HDMI (Female)
	(x3) USB 3.2 Gen 2 Type-A (Female)
	(x1) USB 3.2 Gen 2 Type-C (Female)
	RJ45 (Female)
Max Supported Video Resolution	3.5 mm (Female)
	Single Display (DP or HDMI): 3840 x 2160 @ 30 Hz
	Dual Display (Both DP or DP and HDMI): 1920 x 1080 @ 60 Hz
	Triple Display: 1920 x 1080 @ 30 Hz
Audio (3.5 mm)	2.1-Channel Surround Sound
Ethernet (RJ45)	10/100/1000 Mbps (1 Gbps)
Power Supply	Input: 100–240V, 50/60 Hz, 2A, Output: 20V 5A
HDMI Specification	HDMI 2.0
HDCP Specification	HDCP 1.4/2.2
DisplayPort Specification	DP 1.4
5V 1.5A Charging Compliant	Yes
Operating Temperature	32° to 104°F (0° to 40°C)
Storage Temperature	-4° to 158°F (-20° to 70°C)
PD Charging Specification	PD 3.0 (up to 85W)
Unit Dimensions (H x W x D)	3.4 x 7.5 x 1.1 in (8.5 x 19 x 2.7 cm)
Unit Weight	0.55 lb. (0.25 kg)
Support Color Depth (HDMI)	36-Bit True Color
Chroma Subsampling (HDMI)	4:4:4

Warranty and Product Registration

1-Year Limited Warranty

Seller warrants this product, if used in accordance with all applicable instructions, to be free from original defects in material and workmanship for a period of one (1) year from the date of initial purchase. If the product should prove defective in material or workmanship within that period, Seller will repair or replace the product, at its sole discretion.

THIS WARRANTY DOES NOT APPLY TO NORMAL WEAR OR TO DAMAGE RESULTING FROM ACCIDENT, MISUSE, ABUSE OR NEGLIGENCE. SELLER MAKES NO EXPRESS WARRANTIES OTHER THAN THE WARRANTY EXPRESSLY SET FORTH HEREIN. EXCEPT TO THE EXTENT PROHIBITED BY APPLICABLE LAW, ALL IMPLIED WARRANTIES, INCLUDING ALL WARRANTIES OF MERCHANTABILITY OR FITNESS, ARE LIMITED IN DURATION TO THE WARRANTY PERIOD SET FORTH ABOVE; AND THIS WARRANTY EXPRESSLY EXCLUDES ALL INCIDENTAL AND CONSEQUENTIAL DAMAGES. (Some states do not allow limitations on how long an implied warranty lasts, and some states do not allow the exclusion or limitation of incidental or consequential damages, so the above limitations or exclusions may not apply to you. This warranty gives you specific legal rights, and you may have other rights which vary from jurisdiction to jurisdiction.)

WARNING: The individual user should take care to determine prior to use whether this device is suitable, adequate or safe for the use intended. Since individual applications are subject to great variation, the manufacturer makes no representation or warranty as to the suitability or fitness of these devices for any specific application.

PRODUCT REGISTRATION

Visit tripplite.com/warranty today to register your new Tripp Lite product. You'll be automatically entered into a drawing for a chance to win a FREE Tripp Lite product!*

*No purchase necessary. Void where prohibited. Some restrictions apply. See website for details.

Use of this equipment in life support applications where failure of this equipment can reasonably be expected to cause the failure of the life support equipment or to significantly affect its safety or effectiveness is not recommended.

Tripp Lite has a policy of continuous improvement. Specifications are subject to change without notice. Photos and illustrations may differ slightly from actual products.



1111 W. 35th Street, Chicago, IL 60609 USA • [tripplite.com/support](https://www.tripplite.com/support)