

Installation Instructions

12-Port Surface Mount Box for Keystone Jacks

Model: N082-012-WH

Este manual está disponible en español en la página de Tripp Lite: tripplite.com

Ce manuel est disponible en français sur le site Web de Tripp Lite : tripplite.com

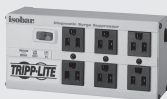
Русскоязычная версия настоящего руководства представлена на веб-сайте
компании Tripp Lite по адресу: tripplite.com

Dieses Handbuch ist in deutscher Sprache auf der Tripp Lite-Website verfügbar:
tripplite.com

WARRANTY REGISTRATION

Register your product today and be
automatically entered to win an ISOBAR®
surge protector in our monthly drawing!

tripplite.com/warranty



1111 W. 35th Street, Chicago, IL 60609 USA • tripplite.com/support

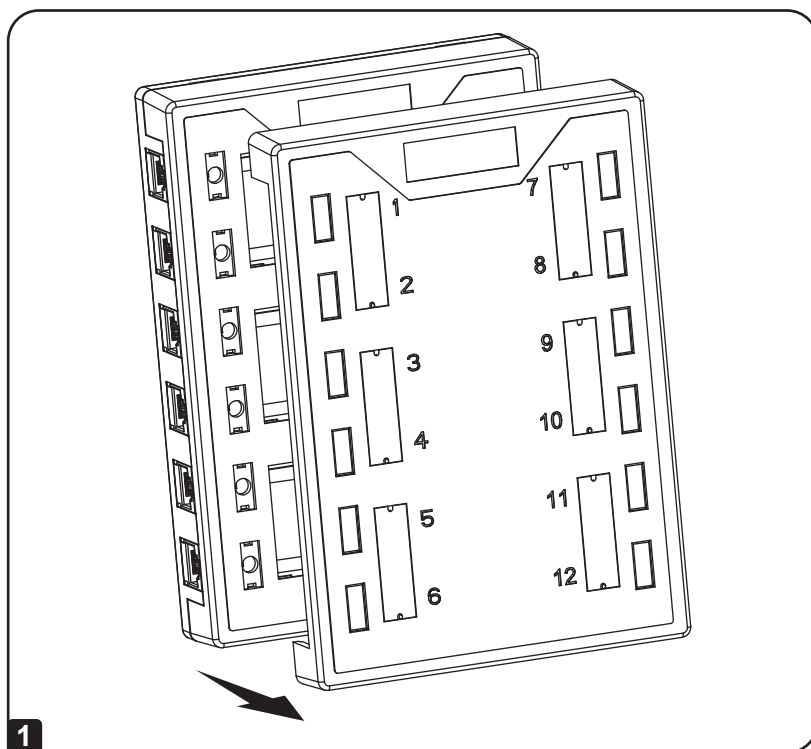
Copyright © 2023 Tripp Lite. All rights reserved.

Installation

Notes:

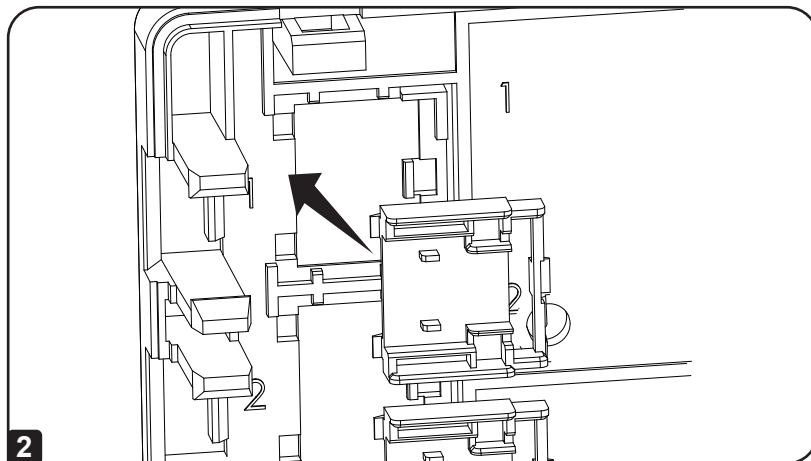
- Be sure product placement is correct prior to using the included hardware to mount the box to a surface.
- It is recommended to configure your installation and knock out the cable raceway breakouts prior to mounting the base panel to a surface, as this may become difficult once the unit is secured in place.
- The included plastic interface connectors are required for connecting the N235-001-SH6A-1 In-Line Coupler or a 90-degree keystone jack.
- The below diagram references the N082-012-WH surface-mount box. The box is compatible with Cat5e, Cat6, Cat6a and Cat8 couplers and keystone jacks. See **Related Items** section of the product's web page at TrippLite.Eaton.com for details.

- 1 Unclasp the front panel from the base panel by pulling each locking clasp apart from its slot.



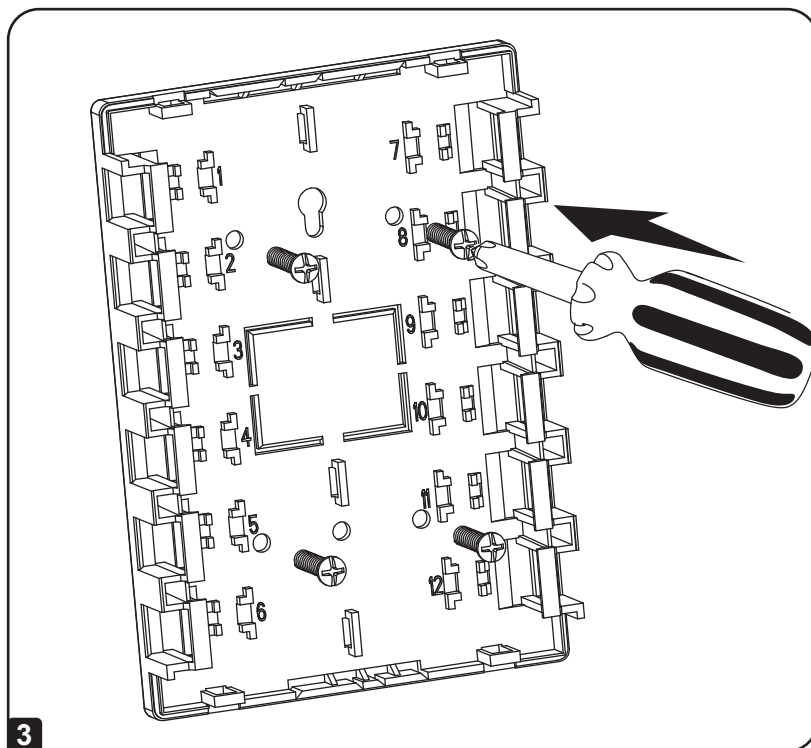
Installation

- 2** **OPTIONAL:** Locate the plastic adapter clips in the unit packaging and install them in as many slots as needed. The clips are required for installing the N235-001-SH6A In-Line Coupler or 90-degree keystone jacks (sold separately). The N238-SHC8-TF-1 should be installed without a clip.



Installation

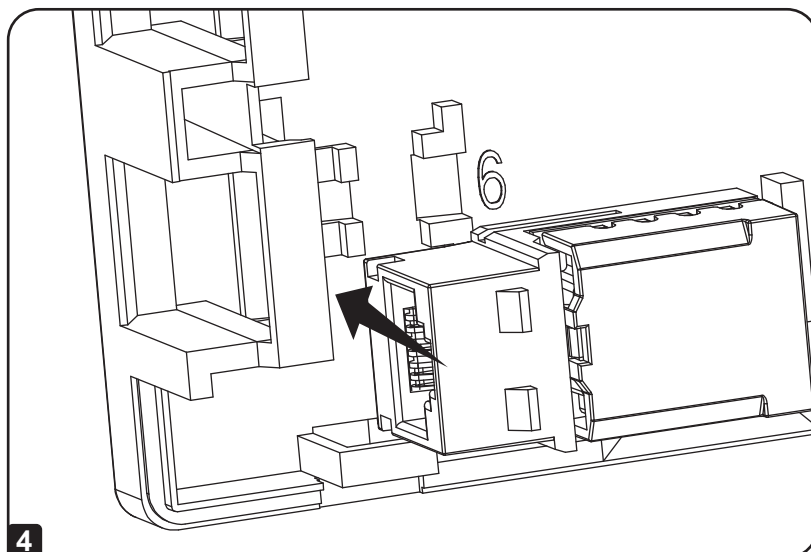
- 3 Carefully mount the base panel to a suitable surface using the included mounting hardware and a user-supplied Phillips screwdriver. Take care to ensure the panel is oriented correctly before installation, with the numbered port designators right-side up as pictured below.



Installation

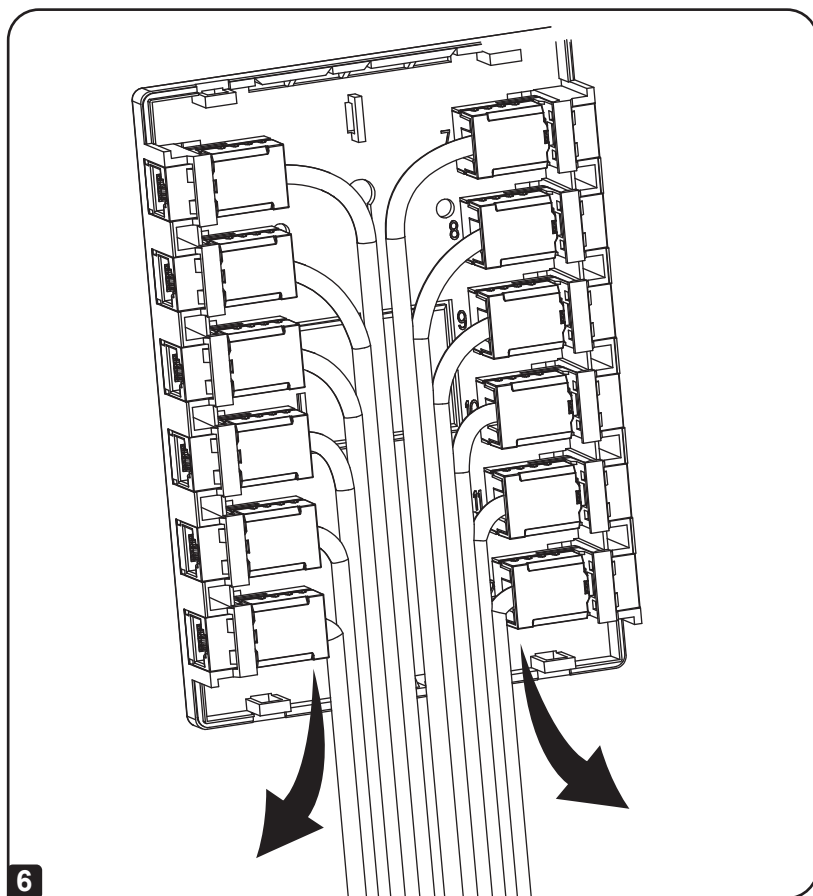
- 4 Install up to 12 shielded Cat5e, Cat6, Cat6a or Cat8 keystone jacks and couplers in the numbered slots on the base panel. Slide each jack into place with the locking clip facing the surface of the base panel until it clicks into place.

Note: Cabling utilizing the N238-SHC8-TF-1 180-degree keystone jack should be pre-terminated prior to connecting the keystone jack into an available slot on the N082-012-WH.



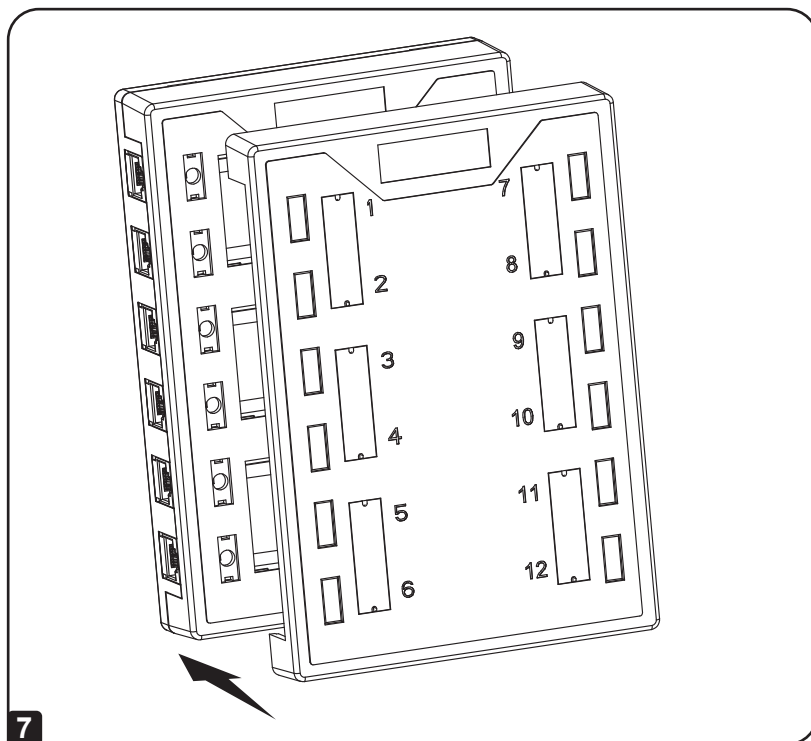
Installation

- 5 Knock out the raceway breakouts on the top and/or bottom of the front panel as necessary to create space for running the installed cabling.
- 6 Connect compatible cables into the ports of each installed coupler or keystone jack (if necessary—this is not required for cabling that has been terminated into an applicable coupler). Use the included cable ties to organize the installed cabling, as necessary.



Installation

- 7 Snap the front panel into place, taking care to ensure the panel is correctly oriented over the rear panel so that all port designators are accurate.



Uninstalling Cabling

To remove installed couplers and keystone jacks from the ports on the surface mount box, first unplug the connected cabling from the port. Then, use two hands to press the desired port's locking teeth in opposite directions from the jack and carefully unlock the jack from its slot.



1111 W. 35th Street, Chicago, IL 60609 USA • tripplite.com/support