

**USB 2.0 Desktop/Laptop
1080p Webcam with
Internal Microphone**

Model:
AWC-001



Purchased
product may
differ from
image.

Este guía esta disponible en español en la página de Eaton:
Tripplite.Eaton.com/support

Ce guide est disponible en français sur le site Web de Eaton :
Tripplite.Eaton.com/support

Questa guida è disponibile in italiano sul sito web Eaton:
Tripplite.Eaton.com/support

Dieses Handbuch ist in deutscher Sprache auf der Eaton-
Website verfügbar: [Tripplite.Eaton.com support](http://Tripplite.Eaton.com/support)



**PRODUCT
REGISTRATION**

Register your product
today for a chance to
win an ISOBAR® surge
protector in our monthly
drawing!

**[Tripplite.Eaton.com/
warranty](http://Tripplite.Eaton.com/warranty)**

Package Contents

- AWC-001 USB 2.0 Webcam
- Owner's Manual

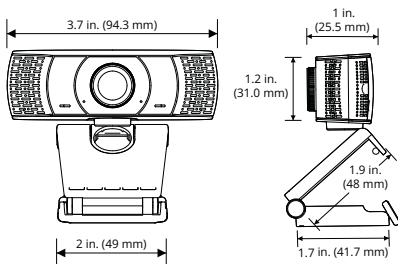
Product Features

- Captures High-Definition (HD) 1080p video at 30 frames per second and 2 megapixel images for livestreaming or conference calls.
- 70° wide-angle lens reduces dead angles and advanced H.264 video compression ensures high-quality transmission.
- Rotatable clip makes it easy to mount onto laptops or monitor screens and tripod threads allow the webcam to mount onto a tripod for extra stability.
- Built-in noise reduction microphone captures audio within 20 ft. to ensure clear communication and sound quality.
- Compatible with Windows® and Mac® operating systems and Skype, Zoom and YouTube software.
- Plug-and-play—no software or drivers to install.

System Requirements

- USB 2.0 port or later
- Windows 7, 8, 10 or later
- Mac 10.10 or later
- Android™ 5.0 or later
- Chrome OS

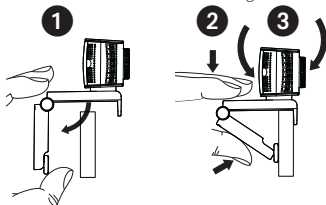
Mounting Instructions



- 1 Open the clip base.
- 2 Mount the webcam to the monitor or laptop.

Note: Make sure the foot on the clip base is flush with the back of your monitor.

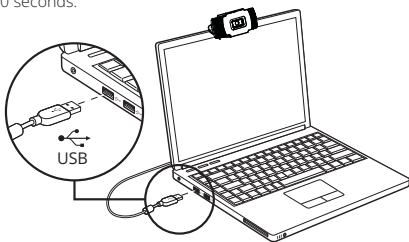
- 3 Rotate the webcam to the desired angle.



Note: Tripod threads on the bottom of the clip base allow the webcam to be mounted onto a tripod.

Connection/Installation

Plug the webcam into a USB-A interface on your PC, laptop or TV STB. The webcam will install automatically in about 60 seconds.



Video Calling

To take advantage of livestreaming or video calls, both you and the recipient must install video-calling applications (such as Skype or Zoom) and webcam hardware.

Frequently Asked Questions

Q: How do I know if my camera is recognized by the operating system?

A: Connect the webcam to any USB 2.0/3.0 port. Once the webcam is connected, it may take a moment before it is recognized by the computer. To check if the webcam is recognized by your computer's operating system, check the following:

Control Panel>System and Security>System>
Device Manager

Q: How do I know if my video calling application is using my webcam?

A: All video applications include an option setting to review the audio and video device. When using the video application, review the following:

The audio selection to ensure the webcam microphone is selected.

- If not, change the selection to the AWC-001 webcam.

The video selection to ensure the webcam is selected.

- If not, change the selection to the AWC-001 webcam.

Frequently Asked Questions

Q: How do I determine if the webcam is properly installed on my computer?

A: For Windows operating systems: Go to:
Computer Management>Device Manager>Cameras.

A: For Mac operating systems: Click on the Finder icon in the Dock. From the Finder window sidebar, click on Applications and open the Photo Booth app. Click on the Camera dropdown from the Photo Booth toolbar. "USB 2.0 Camera" should be listed as the default webcam.

Q: Why is my webcam not working with Skype or Facebook?

A: Software like Skype and Facebook often use the integrated webcam by default. To use the AWC-001 webcam, go to the software's video settings and select the AWC-001 webcam as the video source. For example, with Skype, go to:
Settings>Audio & Video to select the video source.

Specifications

Pixel Size	2.8 μm x 2.8 μm
Operating & Storage Temperature	14°F to 140°F (-10°C to 60°C)
Image Resolution	2 megapixels
Pixel Range	320 x 240, 640 x 480, 1280 x 720, x 1920 x 1080
Frame Rate	30 fps
Lens Size	0.3 in. (7.6 mm)
Interface	USB 2.0 (backwards compatible with USB 1.1)
Data Format	YUY2/MJPEG
Viewing Angle	70°
DC Voltage	5V
Current	200mA
Cable Length	4.9 ft. (1.5 m)
USB Specification	USB 2.0 (backward compatible with USB 1.1)

Warranty and Product Registration

1-Year Limited Warranty

We warrant our products to be free from defects in materials and workmanship for a period of one (1) year from the date of initial purchase. Our obligation under this warranty is limited to repairing or replacing (at its sole option) any such defective products. Visit TrippLite.Eaton.com/support/product-returns before sending any equipment back for repair. This warranty does not apply to equipment which has been damaged by accident, negligence or misapplication or has been altered or modified in any way.

EXCEPT AS PROVIDED HEREIN, WE MAKE NO WARRANTIES, EXPRESS OR IMPLIED, INCLUDING WARRANTIES OF MERCHANTABILITY AND FITNESS FOR A PARTICULAR PURPOSE. Some states do not permit limitation or exclusion of implied warranties; therefore, the aforesaid limitation(s) or exclusion(s) may not apply to the purchaser.

EXCEPT AS PROVIDED ABOVE, IN NO EVENT WILL WE BE LIABLE FOR DIRECT, INDIRECT, SPECIAL, INCIDENTAL OR CONSEQUENTIAL DAMAGES ARISING OUT OF THE USE OF THIS PRODUCT, EVEN IF ADVISED OF THE POSSIBILITY OF SUCH DAMAGE. Specifically, we are not liable for any costs, such as lost profits or revenue, loss of equipment, loss of use of equipment, loss of software, loss of data, costs of substitutes, claims by third parties, or otherwise.

Warranty and Product Registration

Product Registration

Visit Tripplite.Eaton.com/warranty today to register your new product. You'll be automatically entered into a drawing for a chance to win a FREE Eaton Tripp Lite series product!*

* No purchase necessary. Void where prohibited. Some restrictions apply. See website for details.

Compliance

FCC Notice, Class B

This device complies with part 15 of the FCC Rules. Operation is subject to the following two conditions: (1) This device may not cause harmful interference, and (2) this device must accept any interference received, including interference that may cause undesired operation.

Note: This equipment has been tested and found to comply with the limits for a Class B digital device, pursuant to part 15 of the FCC Rules. These limits are designed to provide reasonable protection against harmful interference in a residential installation. This equipment generates, uses and can radiate radio frequency energy and, if not installed and used in accordance with the instructions, may cause harmful interference to radio communications. However, there is no guarantee that interference will not occur in a particular installation. If this equipment does cause harmful interference to radio or television reception, which can be determined by turning the equipment off and on, the user is encouraged to try to correct the interference by one or more of the following measures:

- Reorient or relocate the receiving antenna.
- Increase the separation between the equipment and receiver.
- Connect the equipment into an outlet on a circuit different from that to which the receiver is connected.
- Consult the dealer or an experienced radio/TV technician for help. Any changes or modifications to this equipment not expressly approved by Eaton could void the user's authority to operate this equipment.

Compliance

WEEE Compliance Information for Customers and Recyclers (European Union)

Under the Waste Electrical and Electronic Equipment (WEEE) Directive and implementing regulations, when customers buy new electrical and electronic equipment from Eaton, they are entitled to:



- Send old equipment for recycling on a one-for-one, like-for-like basis (this varies depending on the country)
- Send the new equipment back for recycling when this ultimately becomes waste

Use of this equipment in life support applications where failure of this equipment can reasonably be expected to cause the failure of the life support equipment or to significantly affect its safety or effectiveness is not recommended.

Eaton has a policy of continuous improvement. Specifications are subject to change without notice. Photos and illustrations may differ slightly from actual products.



Eaton
1000 Eaton Boulevard
Cleveland, OH 44122
United States
Eaton.com

© 2023 Eaton
All Rights Reserved
Publication No.
23-08-261 /
93-3CF5_revB
September 2023

Eaton is a registered trademark.

All trademarks are property of their respective owners.